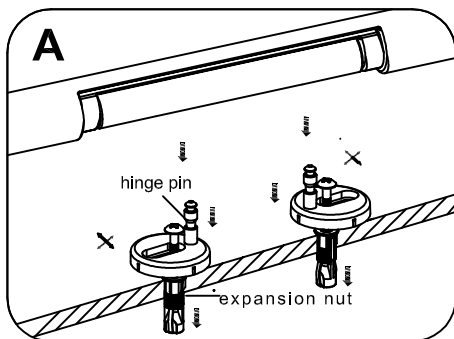
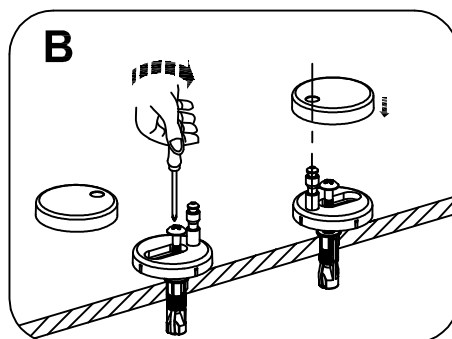


WC SEAT INSTALLATION INSTRUCTION

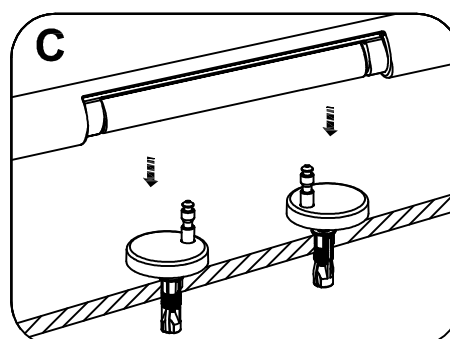


1. Insert the plastic expansion nut into the fixing holes of the toilet pan.

2. Insert the pan fixing screw through the hinge plate.

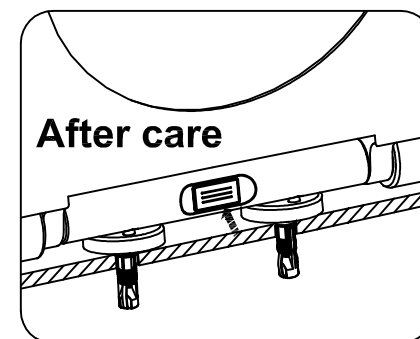


3. Tighten the screw using a screw driver but not firmly fixed. Determine the right position of the hinge pin by placing the seat on the pan and comparing the pins against the pin holes in the seat. Then, continue to tighten the screw until it is firmly fixed.



4. Cover the hinge plates with the hinge covers.

5. Attach the seat onto the toilet pan.



For cleaning, press the middle button just with one finger and take off the seat. Clean the seat and other desired area, and then reattach the seat onto the hinge pins.